

SCREENPLAY FORMAT

dialogue margins
approximately
3.0" - 6.2"

description margins
approximately
1.75" - 7.5"

slug line -- ALL CAPS
(single space break)

description -- single
space

(be careful of
paragraph length;
break long passages
into shorter
paragraphs)

single space
dialogue

top margin -- approximately 1.0"

always number pages 96

CLARKE
That may be premature. You don't
understand what I've —

WELLES
Just send me the bill.

CLARKE
(retreating)
I will. Thank you.

INT WELLES'S INNER OFFICE NIGHT

A quick glance through the report has captured Welles's attention.
He begins to read, page by page.

EXT WELLES'S INNER OFFICE NIGHT

Cars arrive in flurries, with a valet service handling the parking chores.
Sumptuously outfitted Guests stroll into the house.

INT LAURA'S DRESSING ROOM/BEDROOM NIGHT

Now wearing a beautiful gown. Laura paces about the room.
There's a knock on the door.

KATHERINE (O.S.)
Laura — what are you doing?
You're needed downstairs.

LAURA
I know. I know. I'm — I'm just not ready.
It'll only be a few more minutes. Tell
everyone, will you? Another five minutes

KATHERINE (O.S.)
I'll hold you to that. Five more minutes.

EXT JUST OFF THE RANCH ROAD NIGHT

Paul parks his car well out of sight. Carrying the suitcase, he hikes the
several hundred yards to the forested knoll above the hairpin turn.

bottom margin -- approximately 1.5" & 0.5" (depending on dialogue/description break)



Screenplays not meeting the following rules and regulations will be immediately disqualified with refund of the entry fee.

- The competition is open only to residents of the State of Illinois who are 18 and older.
- Screenplays must have, or have pending, a US Copyright @ (202) 707-3000, and/or a Writers Guild of America East registration @ (212) 767-7800 or visit: www.wgae.org.
- Screenplays cannot be previously produced or sold.
- Screenplays submitted must be original work. Adaptions of another author's work will not be accepted.
- Collaborative screenplays will be accepted. One writer should be designated as the contact.
- Screenplays previously entered in this and other competitions are eligible. Past winning screenplays of this competition will not be accepted.
- Screenplay length must be between 90-125 pages.

The screenplay must be in U.S. Motion Picture Industry standard screenplay format as illustrated:

- White index cover stock (#110) front and back are required! No folders or binders.
- Screenplays must be three-hole punched and bound by two metal fasteners.
- Only the title of the screenplay should be placed on the white index cover stock (#110).
- An unattached title page should accompany each screenplay listing the following:
 1. Screenplay Title
 2. Author
 3. Address and Phone Number
- Scripts not meeting this criteria will not be accepted.

COMPETITION
SUBMISSION RELEASE

I/We have read and understand all of the rules and regulations for the 2006 Illinois/Chicago Screenwriting Competition.

I/We warrant the submission is my/our original work and there are no disputes regarding the ownership of the submission.

I/We also warrant the submitted material does not defame or invade the rights of any person living or dead, and I/we fully indemnify the Competition against any claim made for such violations of law.

I/We understand that failure to adhere to the Competition rules and regulations will result in disqualification.

I/We agree to hold the Illinois/Chicago Screenwriting Competition harmless from and defend them against all claims, demands, losses, costs, damages, judgments, liabilities and expenses (including attorney's fees) arising out of or in connection with any and all claims of third parties, whether or not groundless, based on any screenplay submitted to the Competition or on any screenplay developed out of such submissions.

To the best of my/our knowledge, all statements herein are true and correct.

Signature

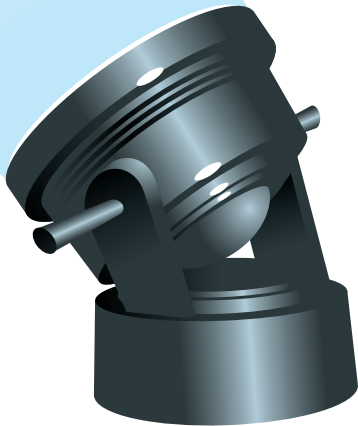
Date

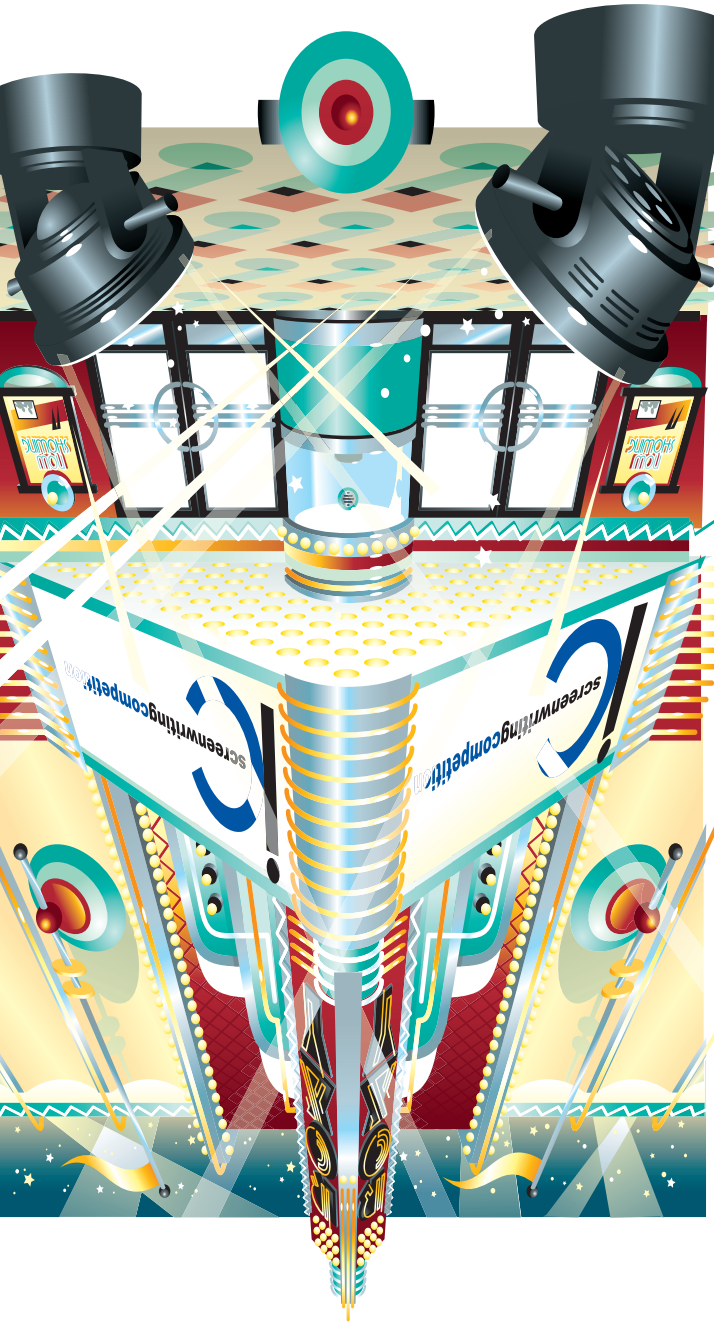
JUDGING/AWARDS

The IC Competition is judged by a three tier confidential system comprised of local and national industry professionals. First tier judges will select approximately 50 semi-finalists.

Second tier judges will select approximately 10 finalists. These writers will receive a copy of their judges' notes and have the opportunity to polish their screenplays before being sent to the third and final tier.

The three winners, announced at the end of the year, will receive a cash prize. In addition, these screenplays will be submitted to a select group of studio executives and producers by special arrangement with the IC 2006 Screenwriting Competition.

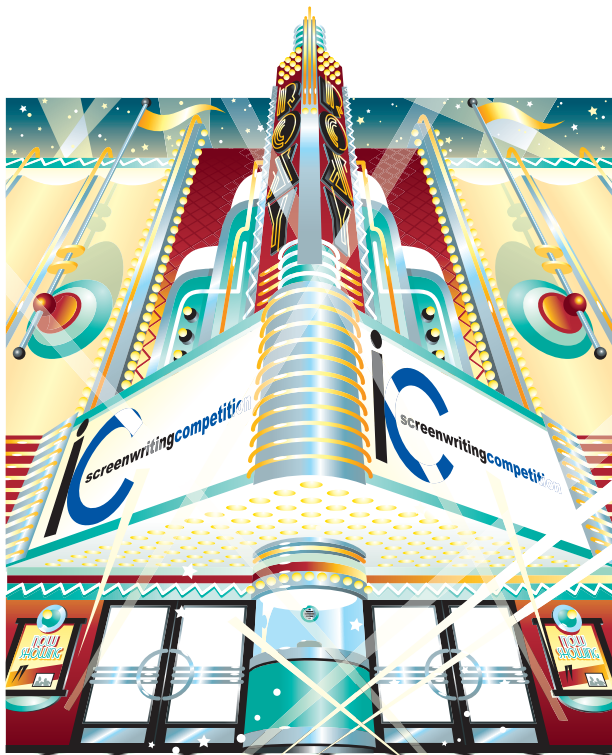




State of Illinois
Rod R. Blagojevich, Governor
City of Chicago
Richard M. Daley, Mayor

screenwritingcompetition
Illinois/Chicago Screenwriting Competition
100 West Randolph Street, Suite 3-400
Chicago, IL 60601

2006
SCREENWRITING
COMPETITION
APPLICATION



Screenplays must be received by
5:00 p.m. on April 17th, 2006
in the Illinois Film Office,
located at:

100 West Randolph Street
Suite 3-400 • Chicago, Illinois, 60601

There is no limit to the number of entries submitted.



dceo
Illinois Department of Commerce
& Economic Opportunity
Rod R. Blagojevich, Governor
Jack Lavin, Director

CHICAGO FILM OFFICE

RICHARD M. DALEY, MAYOR

Brenda Sexton
Managing Director
Illinois Film Office
Richard Moskal
Director
Chicago Film Office

Good luck in all of your writing endeavors!

A series of Writer Seminars will be offered during the competition. Interested participants should call the IC Hotline at 312/814-8711 (TDD: 312/744-2964) for further information.

Submissions will be accepted beginning January 9, 2006 with an April 17, 2006 deadline. Winners will be announced at the end of the year.

On behalf of Governor Rod R. Blagojevich and Mayor Richard M. Daley, we would like to thank you for your interest in the Seventh Illinois/Chicago Screenwriting Competition. The IC Screenwriting Competition is a biennial event sponsored by the Illinois and Chicago Film Offices. It is our aim to support and promote the talents of local writers. In offering this competition we are creating a unique opportunity for the recognition and possible production of work in Illinois.

Dear Applicant:

IC2006 SCREENWRITING COMPETITION ENTRY FORM

Each original screenplay must have its own entry form.

Name: _____

Address: _____

Phone: Day () _____

Evening () _____

e-mail: _____

Occupation: _____

Title of Submission: _____

Screenplay Genre: _____

Logline/Premise Line: _____

For Office Use Only

- ☐ Entry Form
- ☐ Check/Money Order
- ☐ Submission Release
- ☐ Three copies of each screenplay
- ☐ Title Page