



**Illinois ADA Project Conference on
Legal Updates
2010 ADA Standards for Accessible
Design & the Illinois Accessibility
Code**

**Chicago, IL
October 27, 2011**

Session Agenda

- **Session format** — Includes
comparison with the Illinois Accessibility Code
- **Using the standards**
- **Application/ Scoping (Ch 1 & 2)**
- **Building Blocks (Ch 3)**
- **Accessible Routes (Ch 4)**
- **Site/ Bldg Elements (Ch 5)**

Session Agenda

- **Plumbing Elements (Ch 6)**
- **Communication Elements (Ch 7)**
- **Special Rooms/ Spaces (Ch 8)**
- **Built-in Elements (Ch 9)**
- **Recreation Facilities (Ch 10)**



U.S. Access Board

Providing leadership in accessible design


- Guidelines and Standards
- Technical Assistance
- Training and Outreach
- Research
- ABA Enforcement




New Construction

ADA Standards (2010)


Take effect March 15, 2012
can be used now instead of
original standards:



DOJ's 2010 ADA Standards



1991 Standards



UFAS Option
(title II entities)

Effective Date – 3/15/2012

- TITLE III - building permit/ permit extension application is certified as complete (or is submitted where completion not certified)

OR

- TITLE II - start of physical construction or alteration (where no permit required)

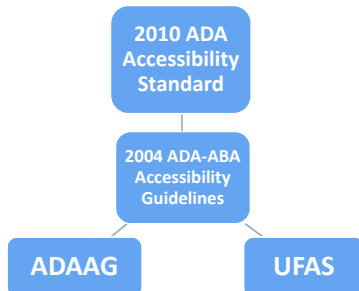
UNITED STATES ACCESS BOARD

2010 ADA Standards



Same as the Board's
ADA-ABA Guidelines
(2004)
... plus requirements
DOJ added

Updated accessibility guidelines and standards



UNITED STATES ACCESS BOARD

2010 ADA Standards



Additional DOJ requirements:

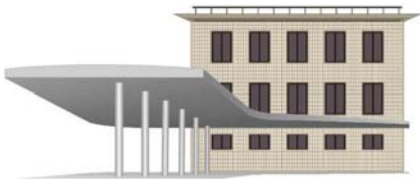
- Social Service Center Establishments
- Housing at Places of Education
- Assembly Areas
- Medical Care Facilities
- Residential Dwelling Units
- Detention and Correctional Facilities
- Places of Lodging

ADA Standards

Transit Facilities

(e.g., bus stops/stations, rail stations):

DOT's ADA standards (2006)



Additional DOT Requirements

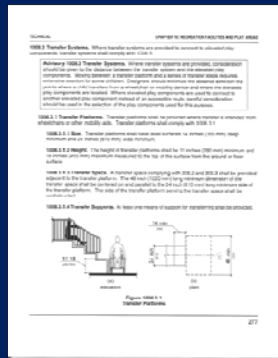
Revisions in DOT's standards:



- Location of accessible routes (206.3)
- Detectable warnings on curb ramps (406.8)
- Bus boarding and alighting areas (810.2.2)
- Rail station platforms (810.5.3)

New Format

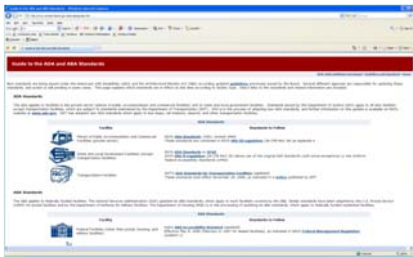
- Numbering system
- New figures (informational only)
- All dimensions in text (not just figures)
- New advisory notes follow provision



UNITED STATES ACCESS BOARD 13

Online Guidance

www.access-board.gov/ada/



Harmonization



ICC/ANSI A17.1-2003

IBC 2003

Side-by-side Comparisons

[illegible]

New ADAAG, original ADA standards, and IBC/ ANSI

Existing Facilities

What Standards Apply to Existing Facilities?

- Title II — Program accessibility
- Title III — “Readily achievable” barrier removal

Safe Harbor – Existing Facilities

- Elements that comply with 1991 Standards do not need to be modified to meet the 2010 Standards unless those elements are altered on or after March 15, 2012.

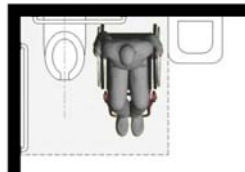
UNITED STATES ACCESS BOARD 19

Covered by Safe Harbor



1991 Standard

2010 Standard
Allows space for side transfers



Safe Harbor – Existing Facilities

Safe Harbor does not apply to elements in existing facilities that were not subject to specific requirements in the 1991 Standards

- | | |
|---|---|
| (A) Residential facilities and dwelling units | (J) Swimming pools, wading pools, and spas, |
| (B) Amusement rides | (K) Shooting facilities with firing positions, |
| (C) Recreational boating facilities | (L) Miscellaneous. |
| (D) Exercise machines and equipment | (1) Team or player seating |
| (E) Fishing piers and platforms | (2) Accessible route to bowling lanes |
| (F) Golf facilities | (3) Accessible route in court sports facilities |
| (G) Miniature golf facilities | |
| (H) Play areas | |
| (I) Saunas and steam rooms | |

UNITED STATES ACCESS BOARD 21

CHAPTER 1

Application and Administration

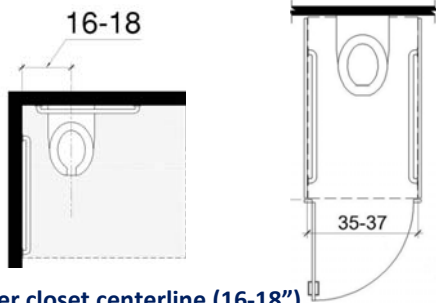
- Purpose
- Dimensions for Adults and Children
- Equivalent Facilitation
- Conventions
- Referenced Standards
- Definitions

Conventions

- Dimensions – range instead of absolute dimension where possible
- Construction *and manufacturing* tolerances
- Scoping percentages/ratios (round up)
- Figures – informational; text governs

UNITED STATES ACCESS BOARD

Ranges instead of absolute dimensions

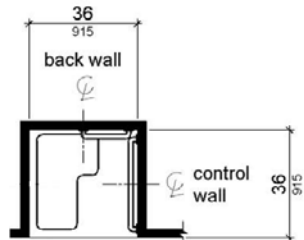


Water closet centerline (16-18")

Width of ambulatory accessible stall (35"- 37")

Some absolute dimensions remain

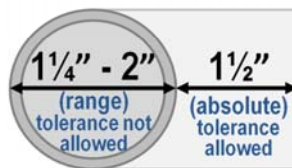
e.g. transfer shower stall (36" x 36")



(measured to center points; manufacturing tolerances recognized)

Tolerances do not apply to ranges

Grab Bar Diameter and Clearance



Referenced Standards

- powered doors (ANSI/BHMA A156.10 & A156.19)
- elevators and lifts (ASME A17.1 & A18.1)
- egress (IBC)
- alarms (NFPA 72)
- play surfacing & equipment (ASTM standards)

UNITED STATES ACCESS BOARD

CHAPTER 2

Scoping Requirements:

- New Construction
- Exceptions
- Additions and Alterations
- Primary Function Areas – Path of Travel
- Qualified Historic Facilities

New Construction

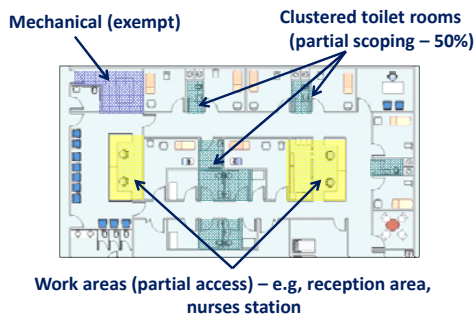
All areas must comply except:

- Exempted structures/ spaces
- Work areas (ADA facilities)
- Partially scoped spaces

UNITED STATES ACCESS BOARD

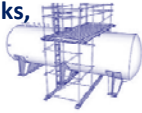
New Construction

Example: Medical Care Suite



General Exceptions

- construction sites
- raised areas (security, life/fire safety)
- spaces accessed by ladders, catwalks, crawl spaces, narrow passageways
- machinery spaces



General Exceptions

- single occupant structures (e.g., toll booths)
accessed only by below-grade passageways
or elevated above standard curb height



General Exceptions

Recreation Facilities

- raised structures used solely for refereeing, judging, or scoring a sport
- raised boxing/ wrestling rings
- water slides and raised diving boards/ platforms
- animal containment areas not open to the public



Work Areas

Minimum requirements:

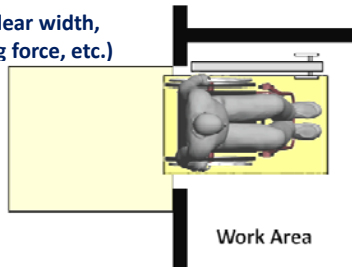
- “approach, entry, & exit”
- circulation paths (in areas ≥ 1000 sq ft)
- means of egress
- visual alarm connection

UNITED STATES ACCESS BOARD

Work Areas

Access for “approach, entry, & exit”

- Door man. clearance
- Compliant door (clear width, hardware, opening force, etc.)
- Clear floor space



Work Areas

Accessible circulation paths



Exceptions:

- areas < 1000 sq. ft.
- paths = integral part of equipment
- exterior areas fully exposed to weather

Work Areas

Exempt:

Areas under 300 s.f. that are elevated at least 7" as an essential functional condition of the space (excluding raised courtroom stations)



Alterations

Alterations

Standards apply based on:

- planned scope of work
- technical feasibility
- primary function areas/ path of travel

UNITED STATES ACCESS BOARD

Alterations

Limited alterations: standards apply element-by-element

Alteration of room/space: standards apply fully to the space

Minimum number: scoping is based on the total number altered

UNITED STATES ACCESS BOARD

Alterations

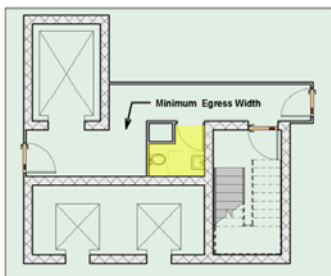
“Technical Infeasibility” =
Existing physical/site constraints that prohibit compliance

Example: removing fixture to create accessible stall conflicts with plumbing code

UNITED STATES ACCESS BOARD

Alterations

Space limitations and technical infeasibility



Alterations



Where renovation = more extensive,
technical infeasibility = less likely

Alterations

Technical Infeasibility:

- case-by-case determination
- based on existing constraints/ conditions and scope of work
- compliance required to the *maximum extent feasible*

UNITED STATES ACCESS BOARD

Alterations

Additional requirements for alterations to areas containing a “primary function” (major activity intended for facility)

Example: classrooms at a school

UNITED STATES ACCESS BOARD

Alterations

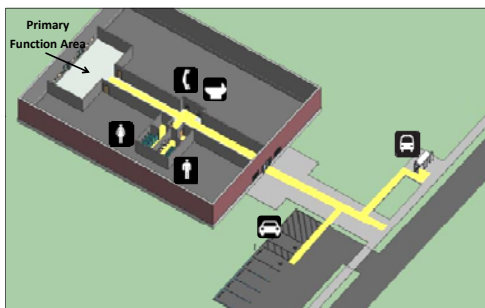
Alterations to primary function areas require accessible “path of travel”:

- accessible route (from site arrival points, parking, building entrances)
- restrooms
- phones
- drinking fountains

UNITED STATES ACCESS BOARD

Alterations

Example of “path of travel”



Alterations

Path of travel:

Compliance required except where “disproportionate” to the project cost (more than 20%)

UNITED STATES ACCESS BOARD

CHAPTER 3

Building Blocks:

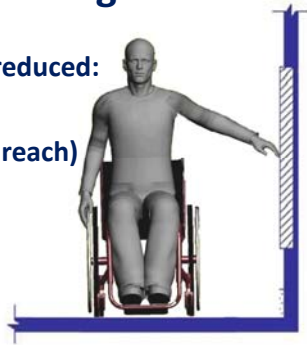
- Floor/ Ground Surfaces
- Changes in Level
- Turning Space
- Clear Floor Space
- Knee & Toe Clearance
- Protruding Objects
- Reach Ranges and Operable Parts

Reach Ranges

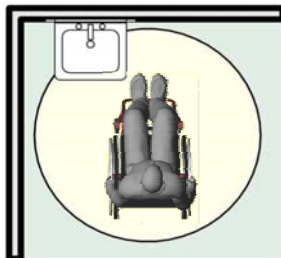
Side reach range reduced:

48" – 15"

(same as forward reach)

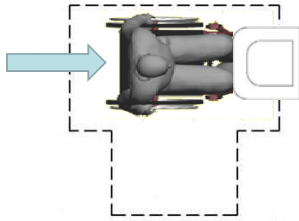


Turning Space



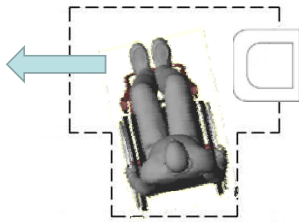
Permitted overlap clarified
(objects with required knee/ toe clearance)

Turning Space



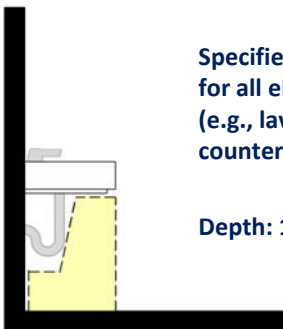
Permitted overlap limited to 1 arm of T-shaped space

Turning Space



Two arms unobstructed (for approach, backing up)

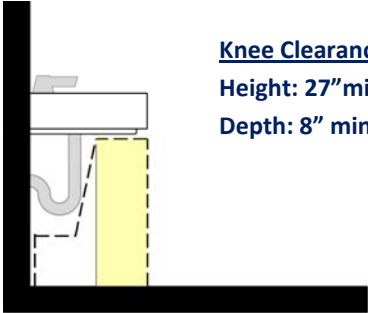
Knee/Toe Clearances



Specified in Chapter 3
for all elements
(e.g., lavs, sinks,
counters, tables, etc.)

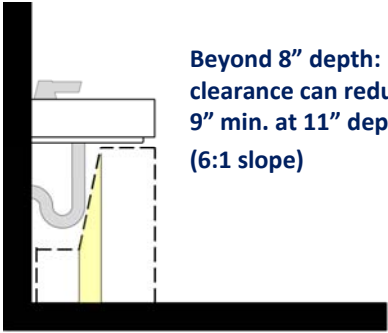
Depth: 17" – 25"

Knee/Toe Clearances



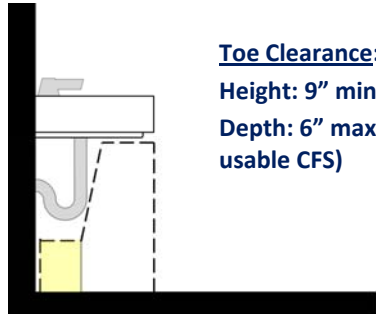
Knee Clearance:
Height: 27" min.
Depth: 8" min.

Knee/Toe Clearances



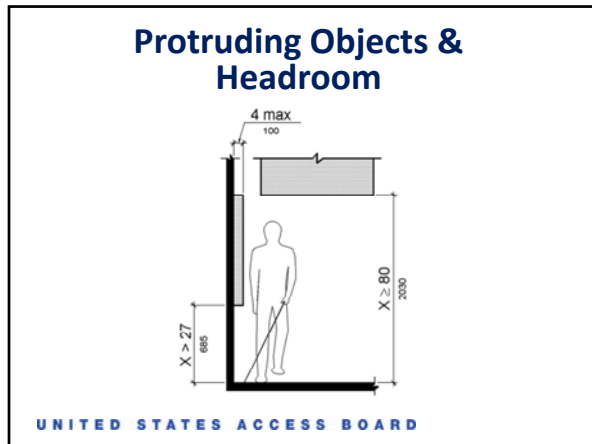
Beyond 8" depth:
clearance can reduce to
9" min. at 11" depth
(6:1 slope)

Knee/Toe Clearances



Toe Clearance:
Height: 9" min.
Depth: 6" max. (of
usable CFS)

UNITED STATES ACCESS BOARD



CHAPTER 4

Accessible Routes:

- walking surfaces
- doors and gates
- ramps and curb ramps
- elevators (standard, LULA, residential)
- platform lifts


Accessible Routes

At least one accessible route to building entrances from:

- Streets and sidewalks
- Transportation stops
- Parking
- Passenger loading zones
(where provided)

UNITED STATES ACCESS BOARD

Accessible Route Scoping Section 206

 <p>Americans with Disabilities Act and Architectural Barriers Act Accessibility Guidelines July 23, 2004</p> <p>UNITED STATES ACCESSIBILITY BOARD</p>		<p>TABLE OF CONTENTS</p> <p>ADA CHAPTER 1: APPLICATION AND ADMINISTRATION 5</p> <p>101 Purpose 5</p> <p>102 Dimensions for Adults and Children 5</p> <p>103 Equivalent Facilitation 5</p> <p>104 Constraints 5</p> <p>105 Referenced Standards 8</p> <p>106 Definitions 12</p> <p>ADA CHAPTER 2: SCOPING REQUIREMENTS 18</p> <p>201 Application 18</p> <p>202 Existing Buildings and Facilities 18</p> <p>203 General Excavations 21</p> <p>204 Protruding Objects 22</p> <p>205 Operable Parts 23</p> <p>206 Accessible Routes 23</p> <p>207 Accessible Means of Egress 32</p> <p>208 Parking Spaces 33</p> <p>209 Passenger Loading Zones and Bus Stops 35</p> <p>210 Stairways 36</p> <p>211 Drinking Fountains 36</p> <p>212 Kitchens, Kitchensettes, and Sinks 37</p> <p>213 Toilet Facilities and Bathing Facilities 37</p> <p>214 Washing Machines and Clothes Dryers 38</p> <p>215 Fire Alarm Systems 39</p> <p>216 Signs 39</p> <p>217 Elevators 39</p>
---	--	--

61

Accessible Routes

Clarifications:

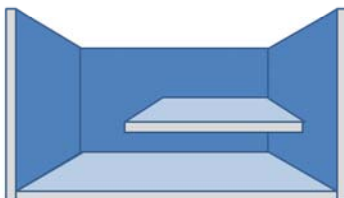
- AR not req'd if no pedestrian route provided
- if circulation path interior, AR must be interior



Accessible Routes

Clarification:


AR not required to mezzanines in
buildings not required to have an elevator



Exceptions (206.2.3)

AR between floors ("elevator exception")

Private sector facilities only:



less than 3 stories OR less than 3,000 sf/ flr)

Exceptions (206.2.3)

Exception not allowed for:

- Shopping centers/ malls
- Professional offices of health care providers
- Terminal, depots, or stations used for public transportation

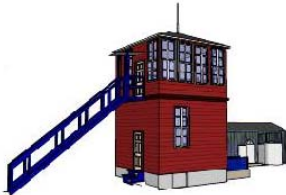
UNITED STATES ACCESS BOARD

Exceptions (206.2.3)

New exception for public (gov't) buildings:

- 2 story only AND
- 1 floor has: no public space AND max. occupancy of 5

e.g. train dispatch
or boat traffic towers



Exceptions (206.2.3)

Additional exceptions:

- detention and correctional facilities
- residential facilities
- transient lodging (certain (multi-story units)
- air traffic control tower cab
- qualified historic facilities



Press Boxes

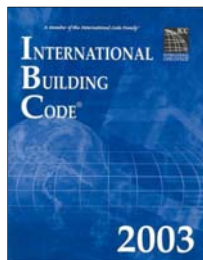
New exception:

- 500 sq ft or less (aggregate) and
- on bleachers entered on 1 level or
- or elevated 12' or more (free standing)



Accessible Means of Egress

- Reference to the International Building Code (IBC)
- Standby power for platform lifts on egress routes



UNITED STATES ACCESS BOARD

Entrances

Scoping:

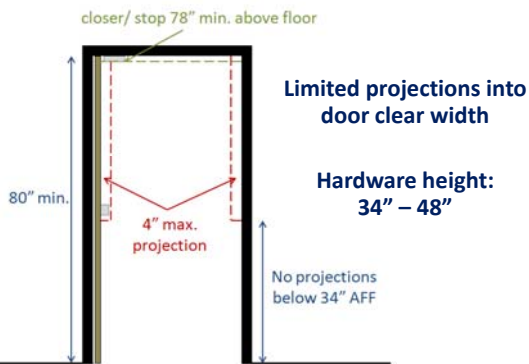
At least 60% of public entrances to comply

Also:

- direct access from parking structures (all)
- direct access from tunnels or elevated walkways
- different fixed routes in transit facilities
- entrances to different tenant spaces
- restricted or secured entrances (at least 1)

UNITED STATES ACCESS BOARD

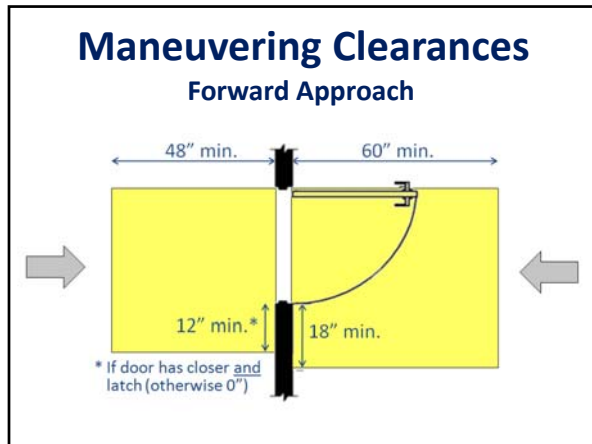
Clear Width (32" min.)

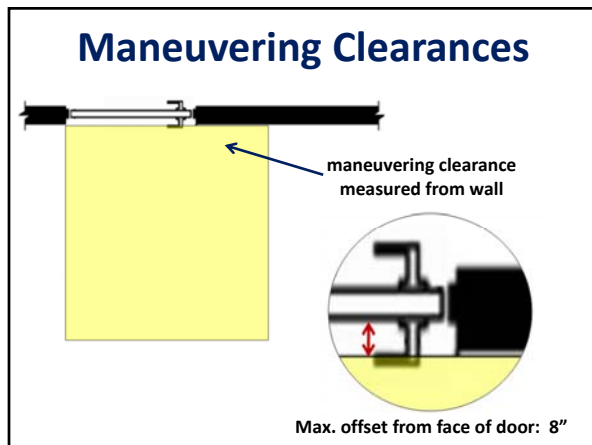


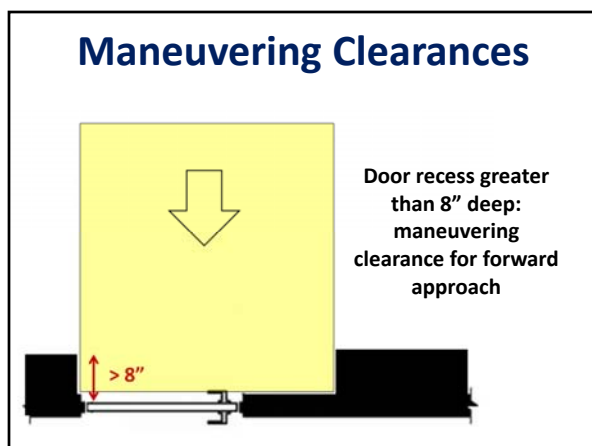
Maneuvering Clearances

Minimum space for positioning/
maneuvering at doors









Maneuvering Clearances



Recess: 8" max.



Recess: greater than 8"

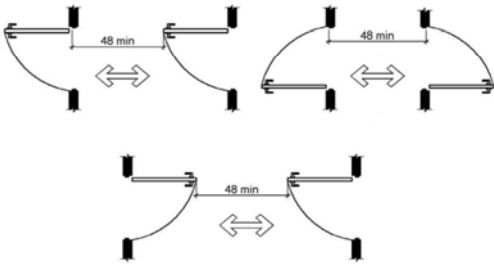
Doors in Series (404.2.6)

48" min. separation between swing of doors



Doors in Series

Requirement applies in all cases
(same direction, in-swinging, out-swinging)



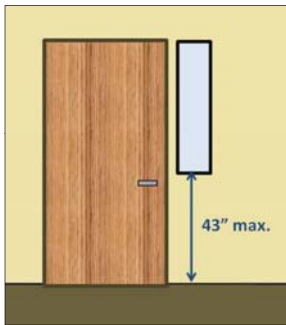
Door Surface

Bottom 10" must be smooth (full width of door)



Kick plates can be used to protect door

Vision Lights



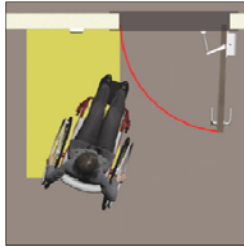
If provided, vision
lights: 43" max. AFF
(not required if
bottom edge is
above 66")

Exterior Doors

Automation recommended (not required)



Controls



Wheelchair space at controls must be outside the door swing

Controls



Control on adjacent wall/post can provide easier access

Entrances



Communication devices must have both visual and audible signals

UNITED STATES ACCESS BOARD

Security Barriers

Alternative route permitted at security screen devices



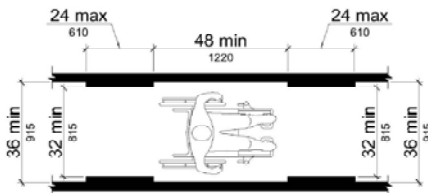
Walking Surfaces

(level areas of routes between ramps, elevators, lifts)

walking surface
1:20 max. slope



Walking Surfaces



New: minimum separation (48")
between reduced clear widths

Cross Slope

Cross slope: 1:48 max.



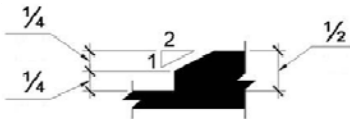
88

Surfaces

changes in level: 1/4" max (vertical)



1/2" max (beveled)



Surfaces

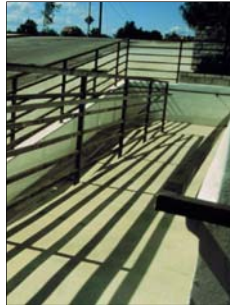
must be: firm, stable, "slip-resistant"



Loose materials generally not compliant
(unless properly treated)

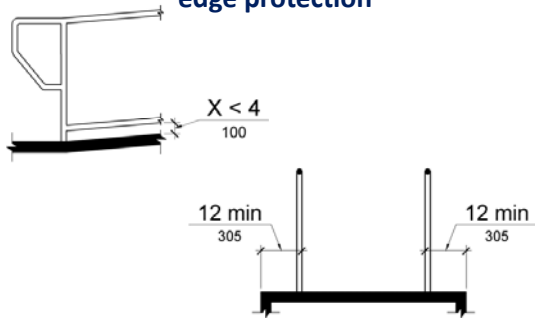
Ramps

- slope: 1:12 max.
- cross slope: 1:48 max.
- clear width: 36" min.
- rise: 30" max.
- level landings
- handrails (both sides)
- edge protection



Ramps

edge protection



Handrails

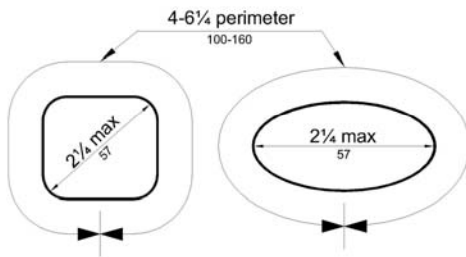
Ramps, stairs, and walkways

- knuckle clearance: 1 ½" min. (not absolute)
- diameter: 1 ¼" – 2" (not 1 ½" max.)
- applies to outer diameter (clarification)



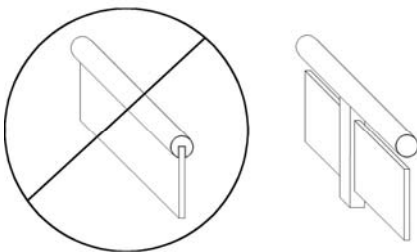
Handrails

gripping surface – more detail, more options



criteria for circular & non-circular cross sections

Handrails



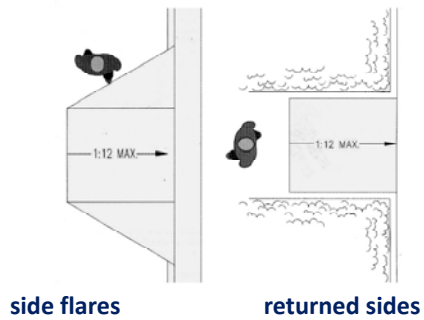
Obstructions limited along bottom of rail;
prohibited on top and sides

Handrails

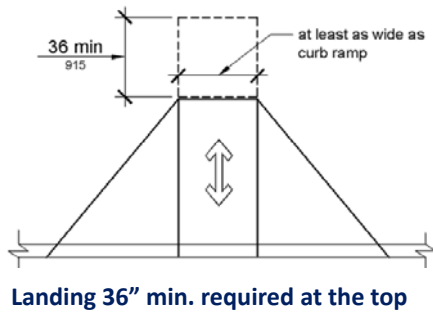
Handrails must comply where provided
along walkways



Curb Ramps



Curb Ramps



Curb Ramps



Lack of space at top makes curb ramps difficult to use

Curb Ramps

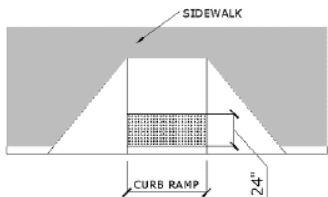
Detectable Warnings – no longer required on curb ramps (except at transit facilities) or hazardous vehicular areas

Board to revisit issue in rulemaking on public rights-of-way



Curb Ramps

DWs – revised specifications available where provided (draft ROW guidelines)



Detectable Warnings

www.access-board.gov/adaag/dws/update.htm

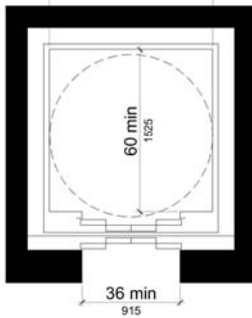


Elevators

- Standard Elevators
- Destination-Oriented Elevators
- Existing Elevators (alterations)
- Limited Use/ Limited Application Elevators (LULAs)
- Private Residence Elevators

UNITED STATES ACCESS BOARD

Standard Elevators



Car sizes – more alternatives

designs providing turning space within car recognized

Standard Elevators

Alterations:

where one car is altered, all cars programmed to respond to the same hall call must be altered



LULA Elevators

Allowed only:

- where standard elevator not required
- as alternative to platform lifts
- in residential dwelling units (private residence elevator also permitted)

UNITED STATES ACCESS BOARD

Private Residence Elevators

- allowed only in residential dwelling units
- required compliance with ASME A17.1

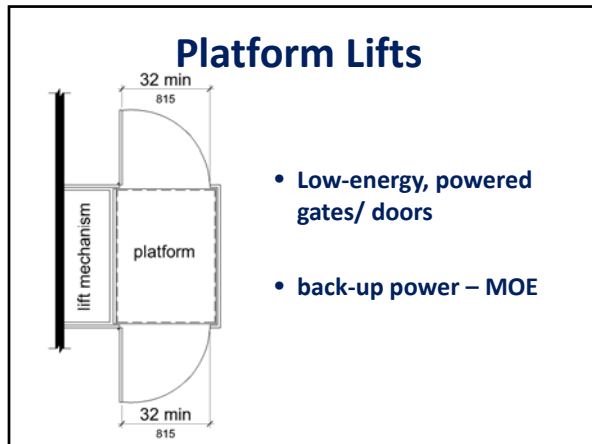


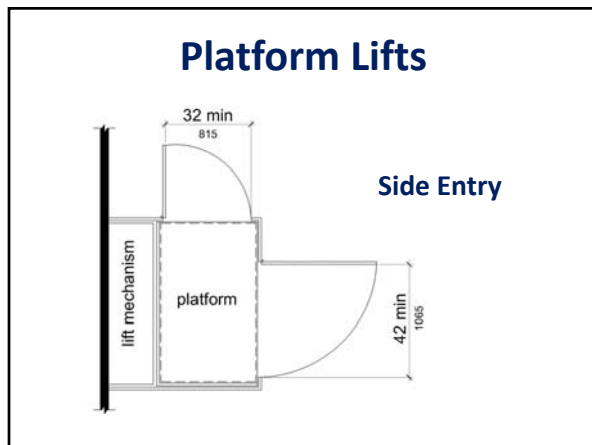
Platform Lifts

Allowed only at:

- performance areas/ speakers' platforms
- wheelchair spaces in assembly areas
- incidental spaces
- judicial spaces (e.g., witness stands, judges' benches)
- existing site constraints

UNITED STATES ACCESS BOARD





CHAPTER 5

General Site & Building Elements :

- Parking
- Passenger Loading Zones
- Stairways
- Handrails

Parking

Clarifications/ revisions:

- Exempt: parking for buses, trucks, delivery and law enforcement vehicles, impound
- Marking of access aisles
- Sign height (60" min.)
- Van spaces: increased scoping (1:6 instead of 1:8)
- Angled vans spaces (aisle on passenger side)



Parking

Scoping applies to each parking facility

Total Number of Parking Spaces	Min. Number of Accessible Spaces
1 to 25	1
26 to 50	2
51 to 75	3
76 to 100	4
101 to 150	5
151 to 200	6
201 to 300	7
301 to 400	8
401 to 500	9
501 to 1000	2 percent of total
1001 and over	20, plus 1 for each 100, or fraction thereof, over 1000

Parking

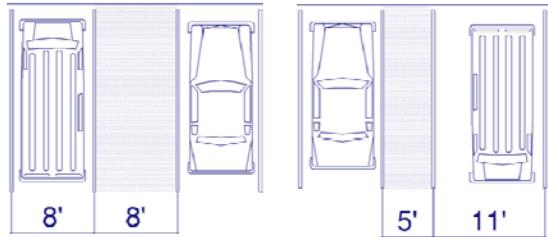
Van Spaces: 1 of 6 accessible spaces



Parking

Van Spaces

Additional 3' width can be added to aisle or space

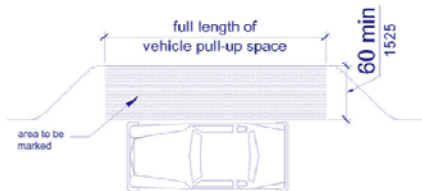


Passenger Loading Zones



At least 1 for every 100 linear ft. of loading zone space provided

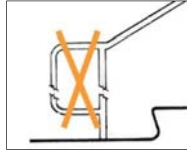
Passenger Loading Zones



- Aisles - same level as pull-up space
- Aisles to be marked
- No level changes in space or aisle

Stairways

Covered: all stairs that are part of means of egress
(exceptions for altered and assembly stairs)



- Removed: level 12" h-rail extension at bottom
- Riser height (4"-7")

CHAPTER 6

Plumbing Elements & Facilities:

- Drinking Fountains
- Toilet & Bathing Rooms
- Water Closets, Toilet Compartments, Urinals
- Lavatories & Sinks
- Bathtubs & Shower Compartments
- Washing Machines & Clothes Dryers
- Saunas & Steam Rooms

Drinking Fountains

Where provided at exterior site or floor, 2 units required (wheelchair & standing access)

- alternative: single "hi-lo" unit
- multiple installations: 50% of each type (can round up or down)



Drinking Fountains

- forward approach - all wheelchair units
- revised specs for spout location & water flow
- clear floor space to be “centered”
- height for standard units: 38”- 43”

UNITED STATES ACCESS BOARD

Toilet Rooms and Bathing Facilities

Clustered Toilet Rooms

New exception:

Access to at least 50% of single user toilet rooms clustered at one location that serve same users (instead of 100%)

UNITED STATES ACCESS BOARD

Clustered Toilet Rooms

Example: medical office suite



Private Toilet Rooms

“Adaptability” permitted:

- private (not common) use
- single occupant
- accessed only through private office



Private Toilet Rooms

Clarified that adaptability allows:

- later provision of grab bars (reinforcement/ blocking)
- alternative toilet seat & lavatory heights
- removable base cabinetry at lavs
- door swing into fixture clearances (where swing can be reversed)

UNITED STATES ACCESS BOARD

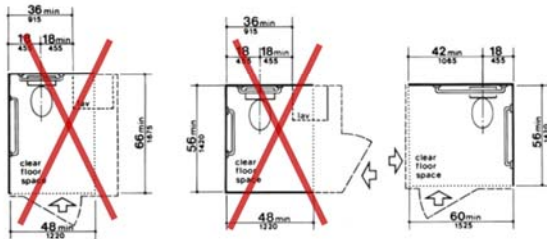
Water Closet Clearance

Lavatory overlap no longer permitted

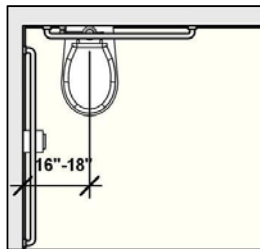


Water Closets

Original ADAAG (fig. 28) permitted overlap



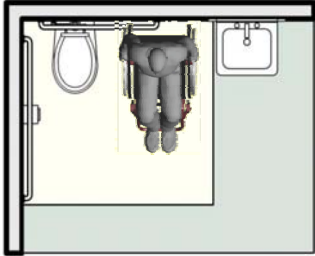
Toilet Rooms



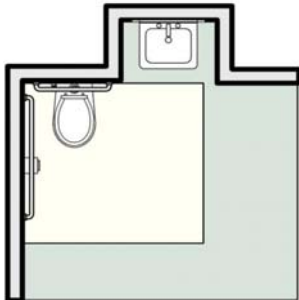
- Range for toilet centerline
- lavatory cannot overlap toilet clearance (except in dwelling units)

Toilet Rooms

Allows space for side transfers

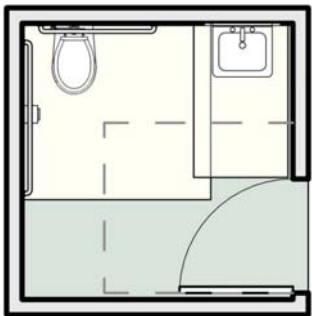


Toilet Rooms



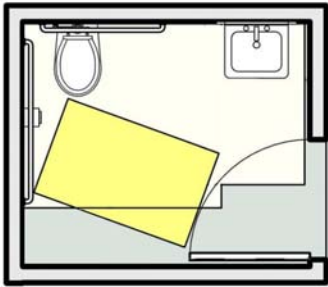
- fixtures can be recessed
- shorter (24" min.) rear grab bar allowed in this case

Toilet Rooms



Door man. clearance; swing outside fixture clearances

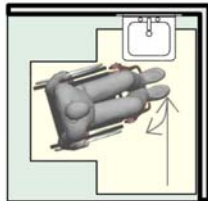
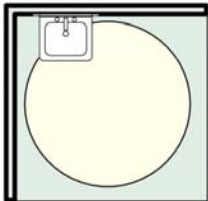
Toilet Rooms



Doors can swing into fixture clearances if clear floor space (30" x 48" min.) provided outside swing

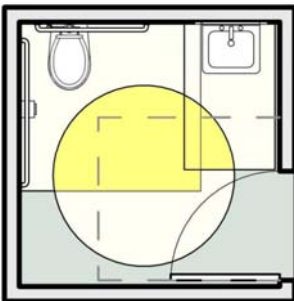
Turning Space

60" Diameter circle or "T" turn
(elements with knee/toe clearance can overlap)



T-Turn: overlap limited to one segment

Toilet Rooms

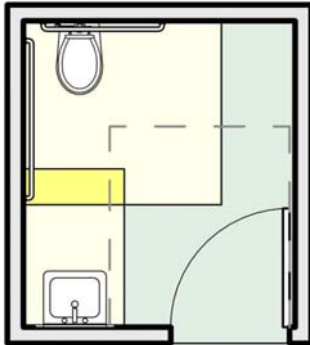


Turning space can overlap fixture & door clearances;
door can swing into turning space

Toilet Rooms

Same requirements
apply for any design/
configuration

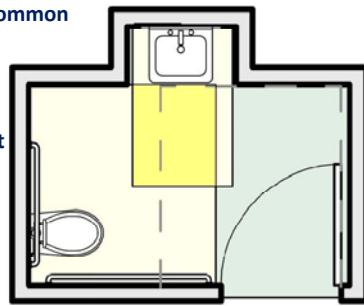
(turning space not
shown)



Toilet Rooms

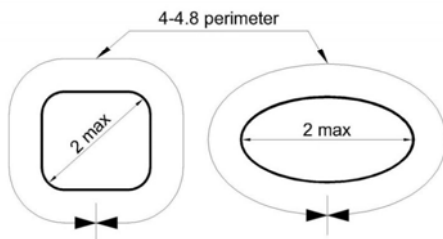
... including less common
designs

(turning space not
shown)



Grab Bars

- wider diameter – 2" max. (instead of 1 ½")
- circular and non-circular cross sections



Grab Bars



Clearances at grab bars
help ensure usability

Grab Bars

Clearances:

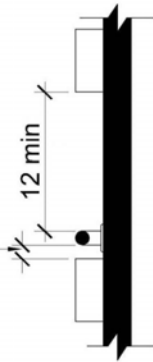
1 ½" behind (absolute)

1 ½" min. below

New:

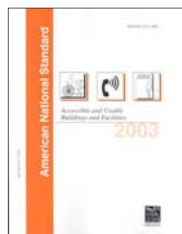
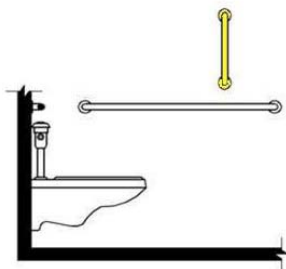
12" min. above

1 ½ min



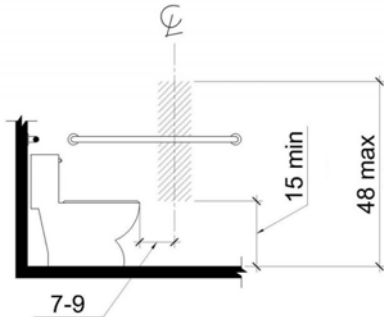
Grab Bars

ANSI A117.1 requires 18" min. vertical grab bar
(ADA and ABA guidelines do not)



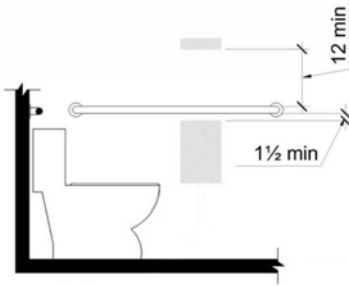
TP Dispenser

Dispenser location



TP Dispenser

grab bar height (33"-36") and clearances further limit location of non-recessed dispensers



Dispensers

Common problem: large dispensers above grab bar impact usability



Dispensers

... below bar they can be out of reach range and obstruct space at WC



Children's Toilets

Alternate specifications permitted for toilets designed for children 12 & younger



Children's Toilets

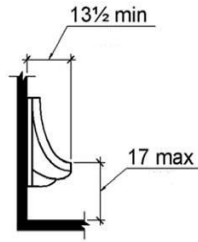
Advisory information provides guidance according to age group

	Ages 3 & 4	Ages 5 - 8	Ages 9 - 12
WC Centerline	12 in	12 - 15 in	15 - 18 in
Toilet Seat Height	11 - 12 in	12 - 15 in	15 - 17 in
Grab Bar Height	18 - 20 in	20 - 25 in	25 - 27 in
Dispenser Height	14 in	14 - 17 in	17 - 19 in

Urinals

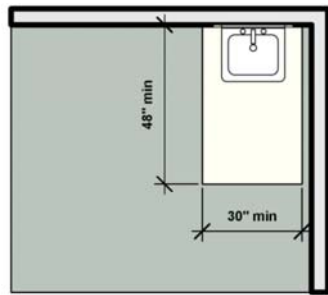
17" max. height, elongated rim

New standards: "elongated" = 13 ½" min.



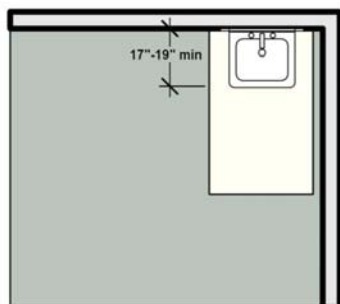
Lavatories

Clear floor space at lavatories



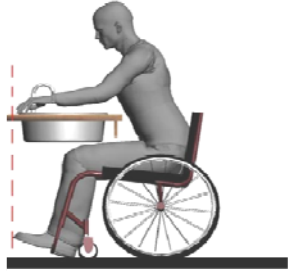
Lavatories

Required lavatory overlap of CFS



Lavatories

Locate controls & dispensers above, not beyond, usable CFS to be within reach



Lavatories

Tip: Avoid hospital style lavs with deep projections



They take up more space and require a greater reach to faucet controls and dispensers

Lavatories and Sinks

- apron clearance (29" min.) removed
- parallel approach - kitchen sinks in spaces without cook tops/ ranges
- removable cabinetry: allowed in dwelling units (if certain conditions met)



Sinks

Public/ Common Use:
full access to 5%

- Classrooms
- Research laboratory
(if used for instruction)
- Break room*
- Preschool classroom*

* side approach access allowed

**Work Areas: access not
required (recommended)**

- Commercial laboratory
- Research laboratory
(employee use only)
- Restaurant kitchen
- Janitor's sink (*exempt*)

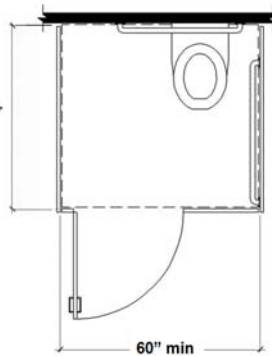
**Dwelling Units: adaptability
allowed**

- Kitchens

Toilet Stalls

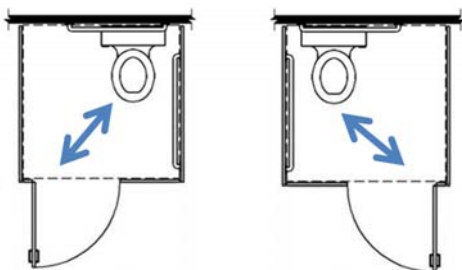
Standard Stall

56" min. (wall hung WC)
59" min. (floor-mounted or
children's WC)

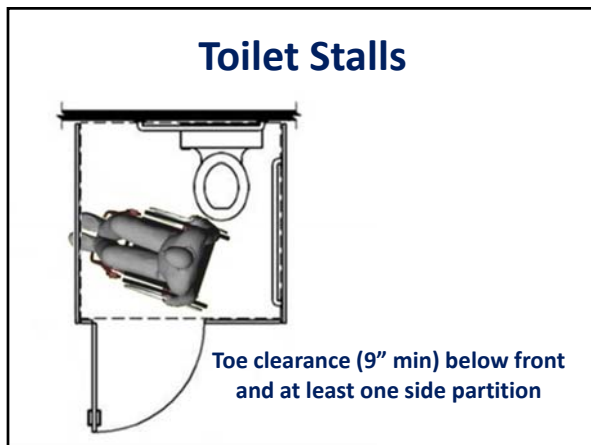


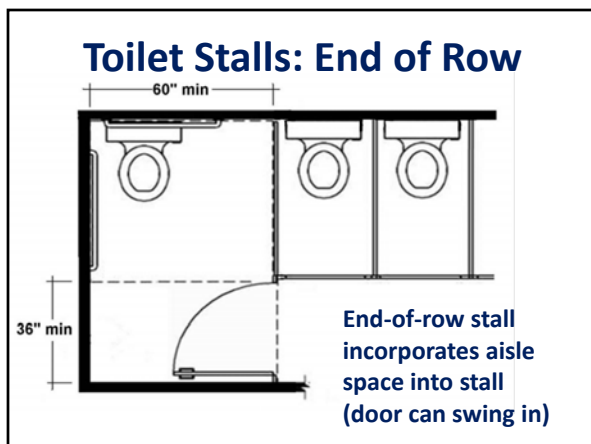
Toilet Stalls

Door and WC: offset configuration









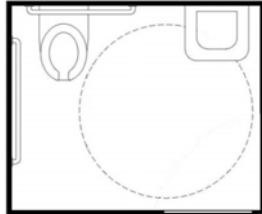
Toilet Stalls

Lavs in toilet stalls

New standards:

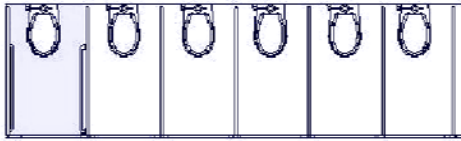
Stalls with more >1 plumbing fixture treated as toilet room

Second accessible lav required outside stall



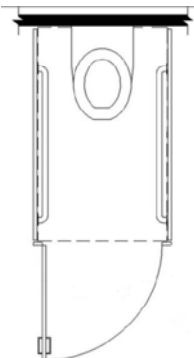
Ambulatory Stall

Required where 6 or more stalls provided



Ambulatory Stall

- parallel grab bars
- width: 35" – 37"
- depth: 60" min.
- doors: out-swinging, self-closing



Bathing Facilities

At least one shower or tub required

Options:

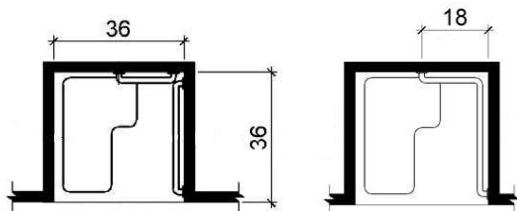
- transfer shower stall
- roll-in shower
- combination transfer/roll-in shower (required in some transient lodging rooms)
- tubs

Transfer Stall



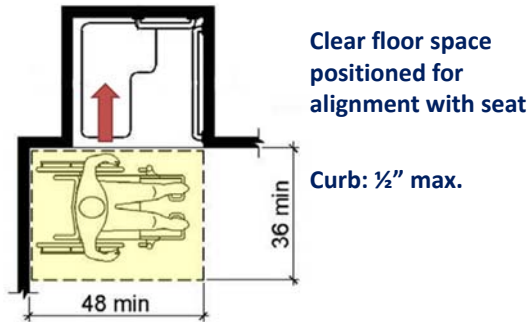
Transfer Stall

Stall dimensions: absolute, not minimum
New standards: 36" measured at center point



Grab bars can be continuous or split

Transfer Stall



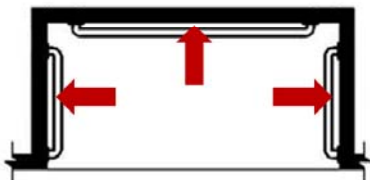
Transfer Stall



Common error:
Insufficient space at
seat wall

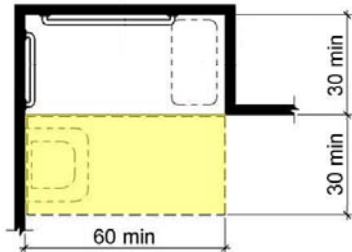
Roll-in Shower (no seat)

Shower head and controls permitted
on any wall if no seat provided



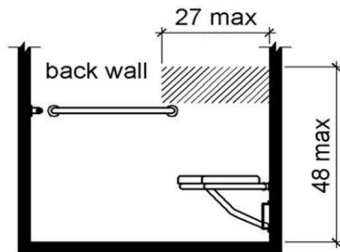
Roll-in Shower (with seat)

grab bar ends at seat, seat must be folding



Roll-in Shower (with seat)

Shower head/controls required on back within reach from seat



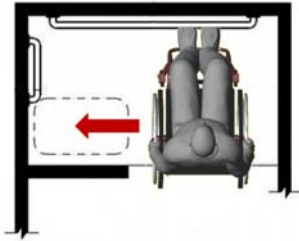
Roll-in Shower (with seat)

Improper location makes controls and shower spray unit unusable from seat



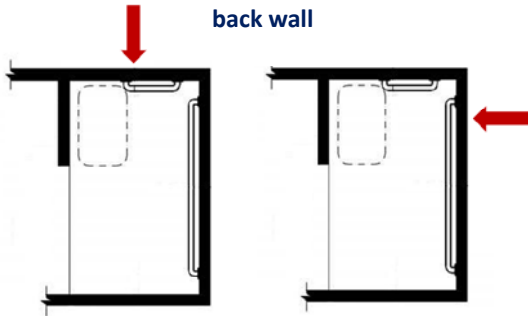
Alternate Roll-in/Transfer

36" depth allows alignment with seat for transfer



Alternate Roll-in/Transfer

Location of controls and shower head on side or back wall

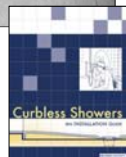


Roll-in Showers

$\frac{1}{2}$ " max. beveled curb allowed (new)

Other ways to control water:

- 2% max. slope allowed
- consider trench drain
- Resource from the Center for Universal Design www.design.ncsu.edu



Shower Spray Unit

Hand-held shower spray unit required (exception for "unmonitored" facilities)

- on/off control
- water temperature (120 degrees max.)



Seats

- dimensions
- location
- height (17" – 19")
- securement
- structural strength



Showers

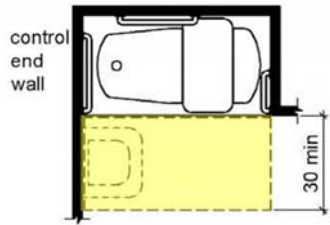
Common Error:



Grab bar on seat wall

Bath Tub (removable seat)

Clear floor space at tub with removable seat



Bath Tub (removable seat)

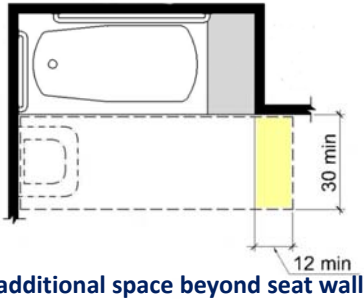


Bath Tub (Permanent Seat)



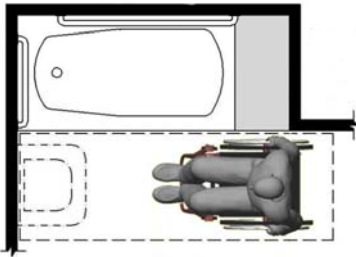
Bath Tub (Permanent Seat)

Clear floor space at tub with permanent seat



Bath Tub (Permanent Seat)

Space beyond seat wall allows alignment for transfer



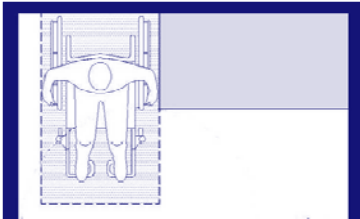
Washing Machines & Dryers

- 1 accessible where 3 or fewer provided
- 2 accessible where more than 3 provided



Saunas & Steam Rooms

- Compliant bench
- Turning space



CHAPTER 7

Communication Elements & Features:

- Fire Alarm Systems
- Signs
- Telephones
- Detectable Warnings
- Assistive Listening Systems
- ATMs & Fare Machines
- Two-Way Communication Systems

Fire Alarm Systems

Where provided, compliance required in:

- public and common use areas
- employee work areas (wiring)
- transient lodging guest rooms
- residential dwelling units

Alterations: compliance required only when system upgraded/ replaced or new one is installed

UNITED STATES ACCESS BOARD

Fire Alarms

NFPA 72
(1999 or 2002)

guidelines require
110 dB max.



UNITED STATES ACCESS BOARD

Fire Alarms

NFPA 72 covers:

- flash rate & pulse duration
- location - wall & ceiling
- minimum intensity
- larger coverage thru fewer appliances
- many spaces (other than corridors) can be covered by 1 appliance
- synchronization of multiple appliances



UNITED STATES ACCESS BOARD

Signs

- Tactile/ visual – labels for permanent rooms & spaces, exit doors
- Visual only – directional or informational signs
- Exempt: temporary signs, building menus, directories, addresses, company names and logos



Tactile Signs

Scoping (interior & exterior):

- Restroom labels (at entry)
- Room numbers/ names (not likely to change)
- Floor levels
- Exit access/discharge
- Areas of Rescue Assistance

UNITED STATES ACCESS BOARD

Signs

Tactile & Visual

"Room 123"
"Restroom"
"Mechanical Room"
"Exit"
"Floor B"
"Ballroom A"
"C. Smith Room"

Visual Only

"Exit →"
"Accounting Department"
"Visitors must sign in"

Exempt

building directory
"Mr. C. Smith, Accountant"

UNITED STATES ACCESS BOARD

Signs

Exempt
(temporary) →

Visual
(Informational) →
Tactile (Room number) →



Tactile Signs

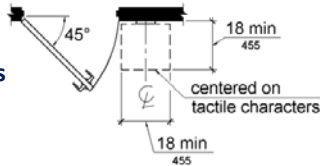
- Raised characters
- Grade 2 Braille
- Visual access (finish and contrast)
- Pictograms (designating room/space)



Signs

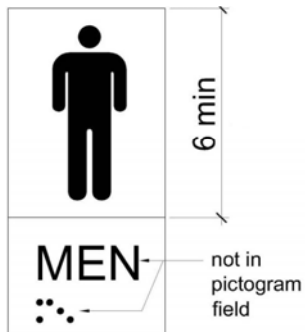
Raised Characters

- sans serif
- character proportion, height, spacing
- line spacing
- height (48" – 60")
- placement at doors



UNITED STATES ACCESS BOARD

Pictograms



Visual Signs

- “conventional form”
- character proportion & spacing
- character height based on viewing distance
- location (40” min. height)
- stroke thickness
- line spacing
- finish & contrast

UNITED STATES ACCESS BOARD

Character Style

New standards specify “conventional form”

Prohibited:

Italic Oblique script
highly decorative
 or other *unusual forms*

Telephones

- volume controls on all phones
- volume control – to 20 dB (12 dB intermediate step)
- automatic reset
- wheelchair access (at least 1 per floor/level, bank, exterior site)



UNITED STATES ACCESS BOARD

Telephones - TTYs

Scoping based on pay phones provided:

- banks – where 4 or more provided (exception for banks within 200 ft.)
- floors and buildings:
 - - where 1 provided (public building)
 - - where 4 or more provided (private bldg.)
- exterior sites – where 4 or more provided (34" min. height keyboard unless seat provided)

Detectable Warnings

Where required:

- Transit platforms (8.10.5)
- Curb ramps at transit facilities (DOT rule) – bottom 2'

Public streets & sidewalks – recommend use of draft ROW guidelines

UNITED STATES ACCESS BOARD

Detectable Warnings

Greater range of designs
& products allowed



- dome diameter (range)
- spacing (range)
- removed: resiliency/ sound-on-cane contact
- color contrast doesn't have to be integral

Assistive Listening Systems

Required where:

- audible communication = integral to use of the space and
- audio amplification
- Courtrooms



Not triggered by fixed seating or occupant load

New technical criteria (sound pressure level, signal-to-noise ratio, peak clipping level)

ATMs & Fare Machines

Access to 1 of each type at each location

- speech output
- privacy
- input controls
- display screen
- Braille instructions (for speech mode)



2-Way Communication Systems



- applies where provided
- audible and visual signals
- handsets (cord length)
- systems serving dwelling units

CHAPTER 8

Special Rooms, Spaces & Elements:

- Assembly areas
- Dressing, fitting, and locker rooms
- Kitchens and kitchenettes
- Medical care and long-term care
- Transient lodging
- Prison cells
- Courtrooms
- Dwelling units
- Transportation facilities
- Storage

Assembly Areas

Wheelchair Spaces

lower scoping for
assembly areas with
more than 500 seats:

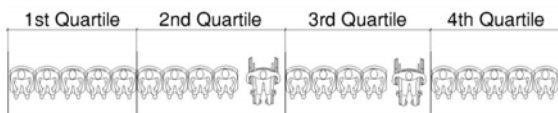


- 501 – 5,000 seats: 1 space/ every 150 seats (instead of 1%)
- > 5,000: 0.5% scoping

Assembly Areas

Horizontal Dispersion

Exception (300 seats max.) if:
spaces & companion seats located in
the 2nd or 3rd quartile of row

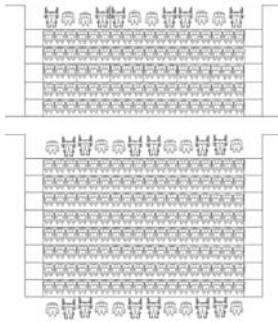


Assembly Areas

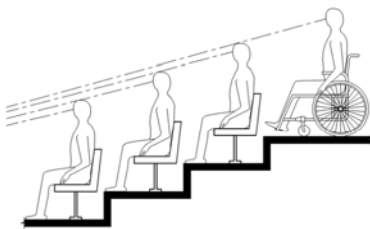
Vertical Dispersion

Exception (300 seats max.) if:

viewing angles = or better than the average viewing angles in the assembly area

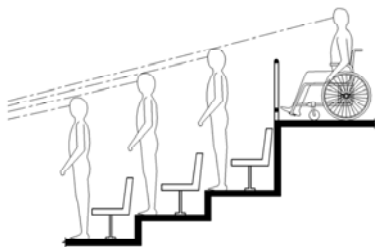


Assembly Areas



Wheelchair spaces must provide comparable lines of sight

Assembly Areas



lines of sight over standing spectators

Assembly Areas

DOJ's regulations :

Dispersion to all levels that include seating served by an accessible route in stadiums, arenas, and grandstands.



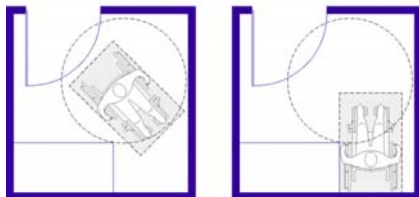
Assembly Areas

Other Changes:

- Companion seat for each space (can be movable)
- Designated aisle seats - 5% of aisle seats
- Lawn seating - accessible route

UNITED STATES ACCESS BOARD

Dressing/ Fitting/ Locker Rooms



- Door swing into turning space (if wheelchair space beyond swing)
- Compliant bench
- Lockers – 5% scoping

Kitchens/ Kitchenettes



New section covers:

- Clearances
- Sinks
- Appliances
- Storage
- Work surface (dwelling units)

Transient Lodging

Total Number of Guest Rooms Provided	Minimum Number of Required Rooms Without Roll-in Showers	Minimum Number of Required Rooms With Roll-in Showers	Total Number of Required Rooms
1 to 25	1	0	1
26 to 50	2	0	2
51 to 75	3	1	4
76 to 100	4	1	5
101 to 150	5	2	7
151 to 200	6	2	8
201 to 300	7	3	10
301 to 400	8	4	12
401 to 500	9	4	13
501 to 1000	2 percent of total	1 percent of total	3 percent of total
1001 and over	20, plus 1 for each 100, or fraction thereof, over 1000	10, plus 1 for each 100, or fraction thereof, over 1000	30, plus 2 for each 100, or fraction thereof, over 1000

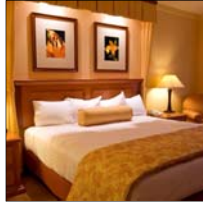
Transient Lodging

- new scoping for beds by room (5%)
- communication features no longer required in all mobility access rooms (in at least 1, no more than 10%)
- New provisions for kitchens/ kitchenettes
- All rooms: 32" min. clear width for doors

UNITED STATES ACCESS BOARD

Transient Lodging

- Bedside clearances
- Accessible routes
- Doors
- Storage
- Controls
- Bathrooms
- Kitchens/ kitchenettes



UNITED STATES ACCESS BOARD

Housing at Places of Education

DOJ's new regulations :

Must comply with transient lodging, plus:

- Turning space & work surfaces in kitchens
- accessible route throughout in accessible multi-bedroom units (per requirement for dwelling units)

UNITED STATES ACCESS BOARD

Housing at Places of Education

DOJ regs require compliance with residential facilities requirements for:

Apartments/ townhomes:

- leased on a year-round basis to graduate students or faculty
- not containing any public or common areas available for educational programming

UNITED STATES ACCESS BOARD

Transient vs. Residential

Transient Lodging: primarily short-term in nature/ not used as a residence

Residential: Intended to be used as a residence, primarily long-term in nature.

UNITED STATES ACCESS BOARD

Dwelling Units

New section:

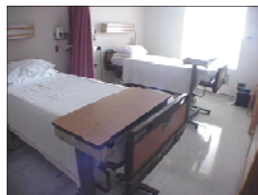
- 5% wheelchair accessible
- 2% communication access features
- Recognize coverage by HUD 504 regulations
- Technical requirements (809)



Medical Care Facilities

Patient Rooms:

- Turning space
- Clear floor space on both sides of beds



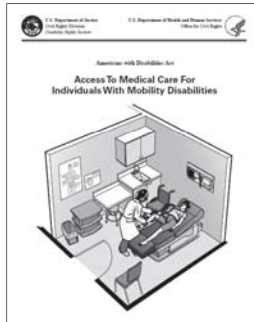
Exceptions:

- Entry door strike-side clearance (hospital rooms) - (404.2.4)
- Toilet rooms exempt in critical/intensive care patient rooms (223.1)

Medical Care Facilities

New guidance
from DOJ

www.ada.gov



Detention/ Correction Facilities

- Accessible cells: 3% (DOJ regs)
- Dispersion (DOJ regs)
- Special holding cells: 1 of each type)



Courtrooms

- jury boxes
- witness stands
- judges' benches
- clerk stations
- spectator areas
- assistive listening systems



Transportation Facilities

- bus boarding/
alighting areas
- bus shelters
- rail stations
- airports



CHAPTER 9

Built-In Elements:

- Dining & Work Surfaces
- Benches
- Check-Out Aisles
- Service Counters



Sales & Service Counters



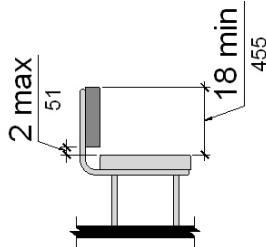
Sales and Service Counters

- 36" max. height (accessible portion)
- Applies to full depth of counter
- 36" min. length (30" min. forward approach)
- security glazing – method to facilitate voice communication

UNITED STATES ACCESS BOARD

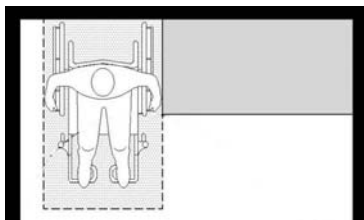
Benches

Back support - new specifications



UNITED STATES ACCESS BOARD

Benches



- clear floor space (parallel to short axis)
- size (42" min. long, 20" – 24" deep)

UNITED STATES ACCESS BOARD

CHAPTER 10

Recreation Facilities:

- amusement rides
- recreational boating facilities
- exercise machines
- fishing piers and platforms
- golf facilities
- miniature golf facilities
- play areas
- swimming pools, wading pools, and spas

Amusement rides

- One of the following per ride
 - Wheelchair space OR
 - Ride seat designed for transfer OR
 - Use of a transfer device
- YOUR CHOICE



UNITED STATES ACCESS BOARD



E
X
C
E
P
T
I
O
N
S

UNITED STATES ACCESS BOARD

Boating facilities



- Marinas, public piers with boat slips
- Fixed and floating (not ferry docks)

UNITED STATES ACCESS BOARD

Boating facilities

- Gangway slope - connecting floating facilities
 - Design for 1:12 maximum slope OR provide up to an 80 foot gangway
 - Less than 25 boat slips design for 1:12 maximum slope OR provide up to a 30 foot gangway



UNITED STATES ACCESS BOARD

Boating facilities

- Number of accessible boat slips
- Uses modified ADAAG parking table
- Dispersed among the different types
- Boat slips not identified, every 40 ft.

Boat Slips Provided	Minimum Accessible
1-25	1
26-50	2
51-100	3
101-150	4
151-300	5
301-400	6
401-500	7
501-600	8
601-700	9
701-800	10
801-900	11
901-1000	12
1001 and over	*
*12 + 1 for each 100 or fraction thereof	

UNITED STATES ACCESS BOARD

Fishing piers and platforms

- Railings - Where provided
- Maximum 34 inch height for 25% of the railing lowered railing dispersed
- Exception: where a guard is provided which complies with ICC/IBC



UNITED STATES ACCESS BOARD

Sports facilities

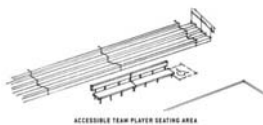
- Area of sport activity = That portion of a room or space where the play or practice of sport occurs
- Accessible route to each area of sport activity
- Exempt from firm, stable, and slip resistant surface provision



UNITED STATES ACCESS BOARD

Team player seating areas

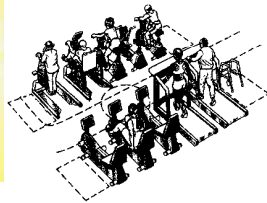
- Platform lift permitted



UNITED STATES ACCESS BOARD

Exercise equipment and machines

- At least one of each type of equipment or machines



UNITED STATES ACCESS BOARD

Bowling lanes

- 5%, not less than one of each type
- Where fixed team player seating areas are provided – not less than 1 wheelchair space at accessible lanes



UNITED STATES ACCESS BOARD

Golf Courses

- In lieu of a compliant accessible route.
- Golf car passage - Continuous passage on which a motorized golf car can operate
- 48 inch minimum width 60 inches min width if handrails are provided



UNITED STATES ACCESS BOARD

Miniature golf

- 50% of holes required to be accessible and consecutive
- Exception permits one break, provided the last hole is included



UNITED STATES ACCESS BOARD

Ground-Level Play Components



- One of each Type
- Minimum number based on number of elevated components provided

UNITED STATES ACCESS BOARD 245

Number of Elevated Play Components

At least 50% of the elevated play components must be on an accessible route.



UNITED STATES ACCESS BOARD 246

Minimum Number of Elevated Components

50% of all elevated play components in a play area must be reached by an accessible route



For less than 20 elevated components:
ramp and/or transfer = 50%



For 20 or more elevated components:
25 % ramp + 25% ramp and/or transfer = 50%

UNITED STATES ACCESS BOARD 247

Swimming pools

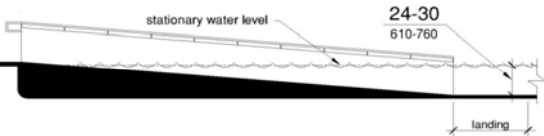
Means of access:

- < 300 linear ft – at least 1 (lift or sloped entry)
- 300 or more linear ft – at least 2:
1) lift or sloped entry
2) transfer wall/system, stairs, lift, or sloped entry



Swimming pools

Sloped Entry

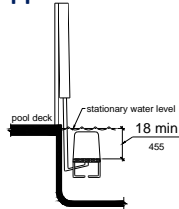


- Extend to 24" – 30" below water level
- 1:12 maximum slope
- Handrails – 33" – 38" max clear width

Swimming pools

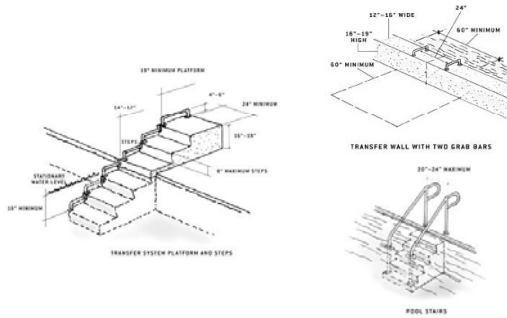
Lifts

- Located where water does not exceed 48"
- Footrests required (that move with seat)
- Armrest (if provided) - opposite water = removable or folding
- Unassisted operation



Swimming pools

Transfer Wall, Transfer System, Stairs



Recreation Facility Guides



Where to Direct Questions



U.S. Department of Justice

- Implementing regulation and additional requirements
- Requirements for existing facilities – title II & III

(800) 514-0301 (voice)

(800) 514-0383 (TTY)

www.ada.gov



U.S. Access Board

- 2010 Accessibility Standards for new construction and alterations

(800) 872-2253 (voice)

(800) 993-2822 (TTY)

(202) 272-0081 (FAX)

ta@access-board.gov

www.access-board.gov

UNITED STATES ACCESS BOARD
